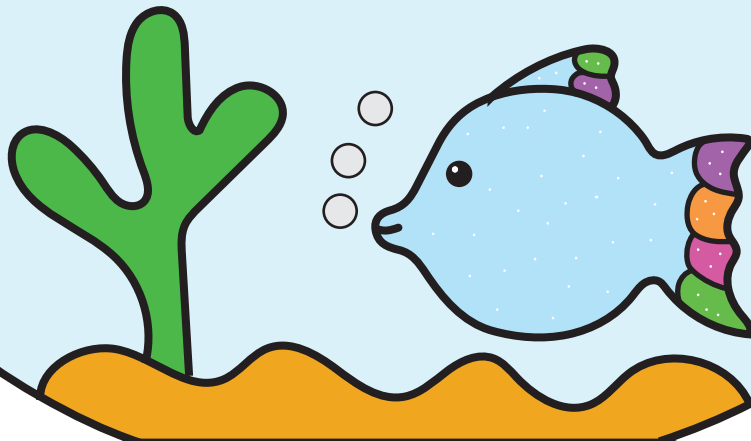
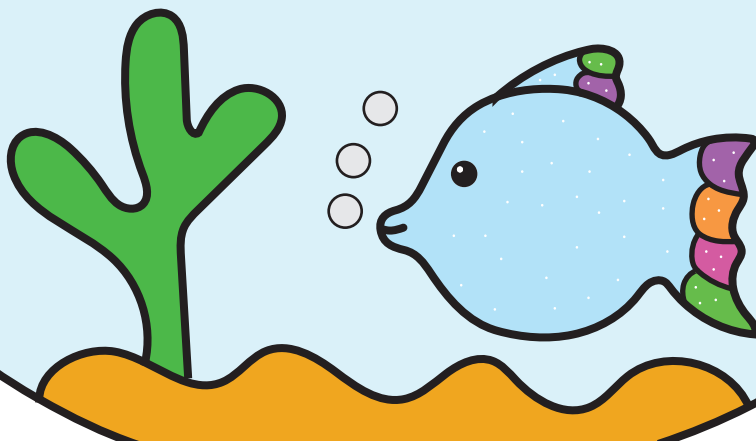
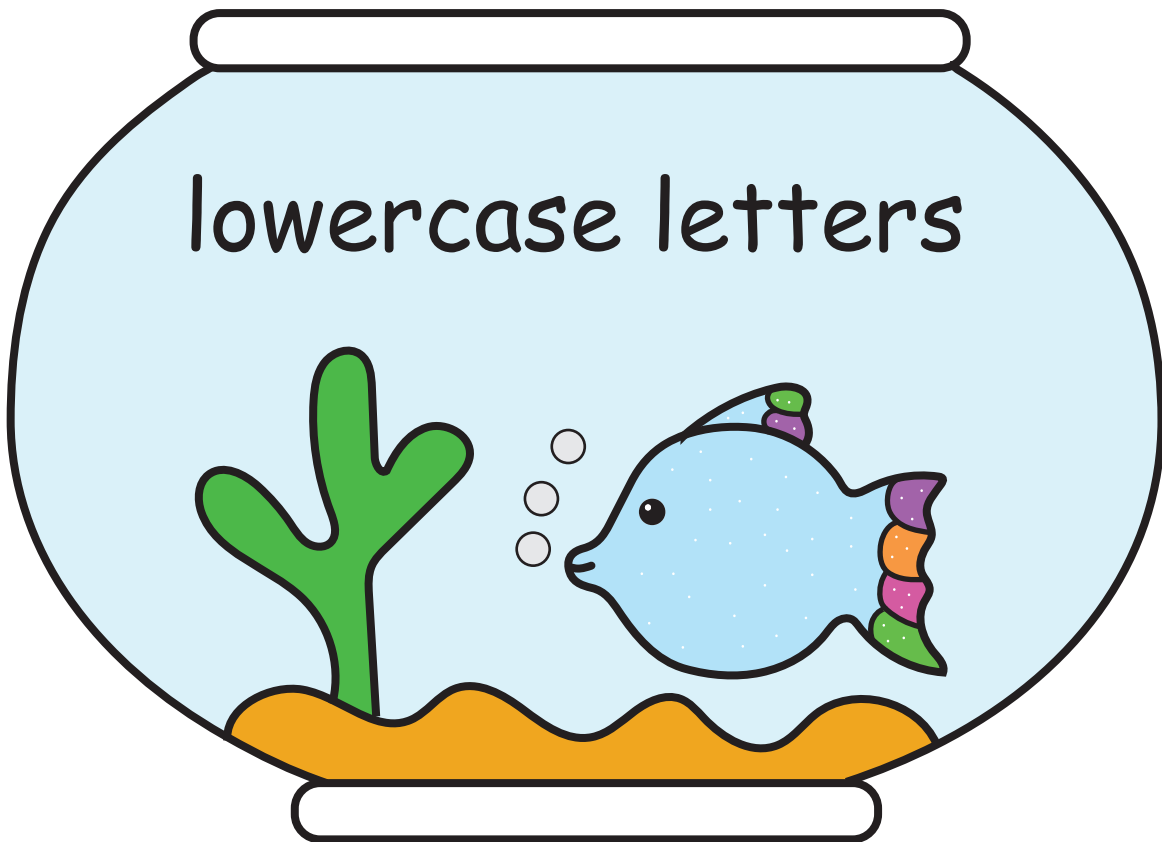
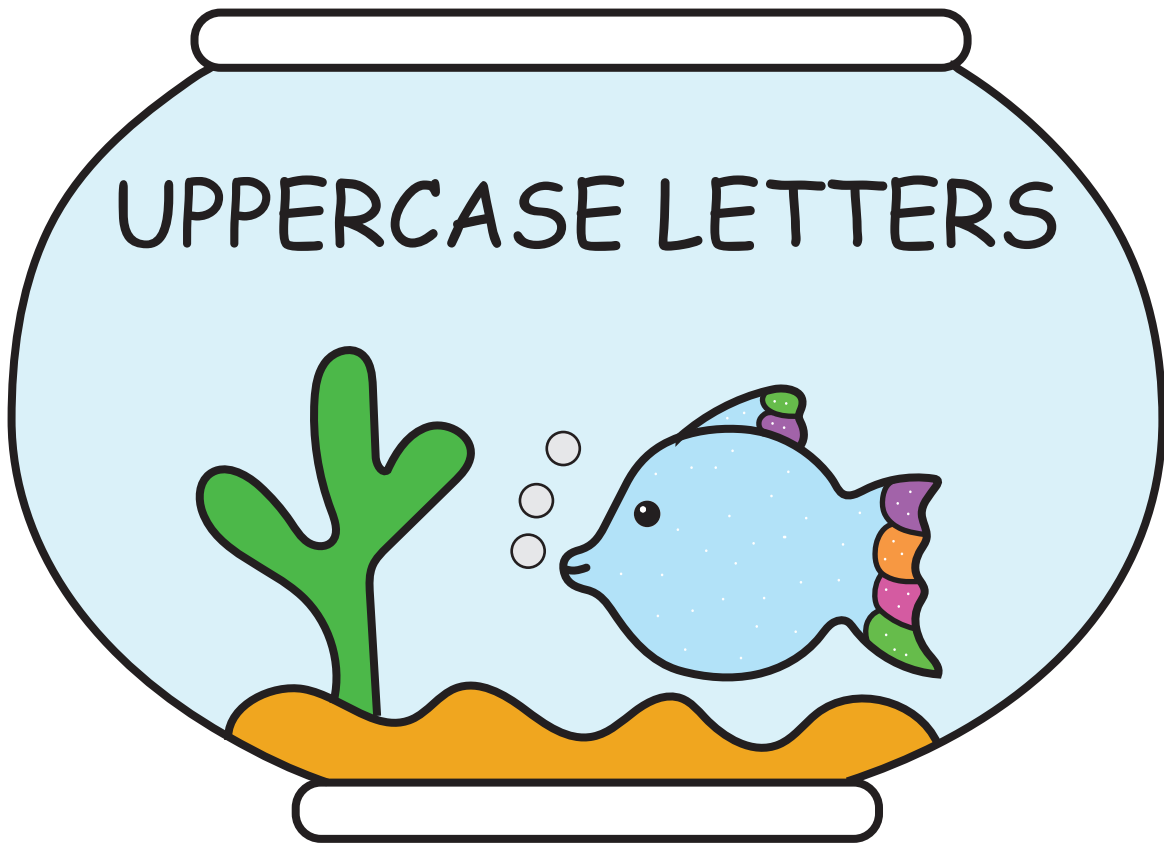


Uppercase Letters

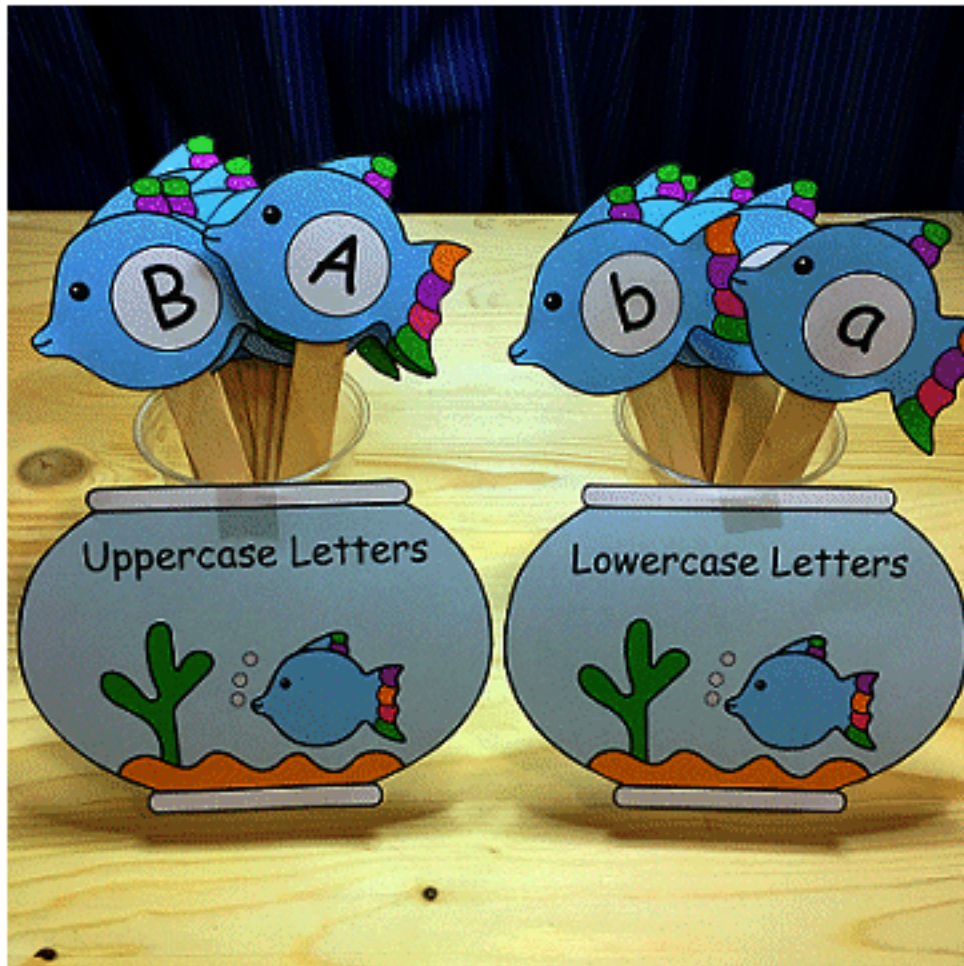


Lowercase Letters





Fishbowl Alphabet Sort



Instructions: Print on cardstock paper and cut out. Glue fish on craft sticks. Attach fishbowls to clear plastic cups. Children put sort the fish and put them in the correct cup. You can also glue the fishbowls onto a sheet of cardstock or construction paper and have the children put the loose fish on the correct mat.